

[View this email in your browser](#)

	<b>South Australian Produce Direct</b> <b>From Local Growers and Food Producers</b>	
	Adelaide Showground, Rose Tce, Wayville	Open Sunday, 8.30am - 12.30pm
<b>MARKET MATTERS</b>		

**Issue: 774** Market Date: 4 December 2022

If you wish to read Market Matters as a PDF, [click here](#)

In order to reduce paper usage, we encourage you to read Market Matters in your browser.

[Power Outage](#)

[Cash](#)

[Promotions](#)

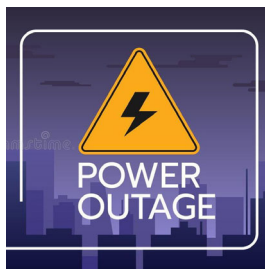
[Oops I Forgot My Card](#)

[Locavore Hambags](#)

[Office Closure](#)

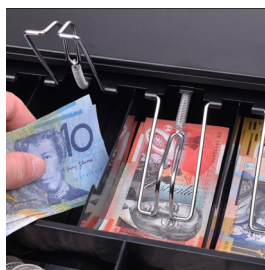
[Christmas Party](#)

You can read past market matters [here](#)



#### **[PLANNED POWER OUTAGE](#)**

Please plan ahead. There will be a full power outage at the Showground for High Voltage maintenance planned for Thursday 29th of December 2022. This will require the site to be fully isolated. On this day the Adelaide Showground is expecting power to be out for approximately 9hrs (7am – 4pm). Please make sure there are **NO** items left in your freezers by COB Saturday 24 December. If you are not trading on that day, please plan to empty your fridges/freezers on Sunday 18th December. No responsibility will be taken for any goods left onsite during the power outage.



#### **[CASH](#)**

Please note that for security reasons the information stand can not carry large amounts of money and cannot provide change/cash floats for stallholders. Please plan ahead to bring the appropriate required cash/float with you. Thank you.



## PROMOTIONS

We are currently running significant advertising campaigns on both Nova and FiveAA in the lead up to Christmas using our shop like a Locavore theme and our "Win a Bike" competition. We ask that you please actively promote membership at your stalls during this busy time. Flyers and corflute signage with direct link QR codes are available to display.



## OOPS I FORGOT MY CARD

If members tell you they have forgotten their card, please direct them to the information stand where we will check that their membership is current and issue them with a dated, '**Oops I forgot my card**' sticker. With computers used at the info stand weekly, we can now quickly check to make sure people requesting stickers are current financial members which is gradually reducing the amount of people misusing this system previously.



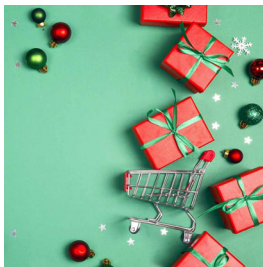
## LOCAVORE HAMBAGS

Anyone signing up as a new member or renewing their membership in December will be the very proud owner of a new '**ASFM Locavore Hambag**'. These purpose made calico hambags are printed with our Locavore theme and are 40cm x 50cm and will store a good size ham. They are also available for purchase at the information stand for \$6 (non members) and \$5 members. Great stocking fillers or Kris Kringle pressies. Available while stocks last.



## OFFICE CLOSURE

The office will be closed from from COB Friday 23 December and reopening at 10am Tuesday, 10th January. If you wish to make deliveries to the market on either Friday the 30/12 or Friday 6/1, please contact Carol at the office on [cmcgrane@adelaidefarmersmarket.com.au](mailto:cmcgrane@adelaidefarmersmarket.com.au) by **COB Tuesday 20 December 2022**, who will then make arrangements with the Showground for you to have preapproved access to the pavilion.



## CHRISTMAS PARTY

All stallholders were sent an email on Tuesday 29/11 asking for RSVP's for the ASFM Stallholder/Volunteer Christmas party to be held on Sunday 11 December after the market. Please make sure you respond with your RSVP no later than COB Monday 5<sup>th</sup> December. **DON'T MISS OUT.** We are unable to cater for people unless they have RSVP'd by this date.

**CONTACT DETAILS:** To contact market staff during office hours only:  
ASFM Office - 82318155    Tues - Friday 9.30am - 4pm **Messages left on this phone will not be accessed outside of these hours.**

- Operations phone - 0419 105 228
- Roz Becker - Marketing & Communications - 0482 615 750



- Christine Robertson - Executive Officer 0414 843 567

**Saturday or After Hours -**

Christine Robertson - Executive Officer 0414 843 567

**Sunday Only 6am - 2pm - Jacqui on 0419 105 228**

**Emails:** [operations@adelaidefarmersmarket.com.au](mailto:operations@adelaidefarmersmarket.com.au) (checked Tues - Fri)  
[info@adelaidefarmersmarket.com.au](mailto:info@adelaidefarmersmarket.com.au) (checked all days)

---

**Stallholders Attending/Returning 4 December**

LOBO Cider, Gentleman Jerky, Kimchi Club, Milkless, Nuthin But Natives, Origin of Taste, Riverside Dairy, Rohdes Free Range Eggs, SA Bio Char, Taronga Almonds, Varci Tonics, Whites Valley Jalopenas, Sacred Grove

**Stallholders NOT Attending/Returning 4 December**

4 Paws, Bone Appetite Barkery, Coinda, 81 Acres, Barmera Sweet Potatoes, Food Forest, Good Country Hemp, Haaseford Farms, Never Never Gin, LOBO Cider, Milkless, OMGhee,



4 December - Santa's Wonderland  
4 December - Gilles at the Grounds  
18 December - Gilles at the Grounds  
22 January - Gilles at the Grounds

[Read More About This Week's Market](#)



Mostly sunny. Light winds becoming southeast to southwesterly 15 to 20 km/h during the day. Min 19 Max 32

---

**Latest BOM Weather Forecast**

*Copyright © 2022 Adelaide Showground Farmers' Market Stallholders Newsletter, All rights reserved.*

Want to change how you receive these emails?  
You can [update your preferences](#) or [unsubscribe from this list](#).



