

[View this email in your browser](#)

	South Australian Produce Direct From Local Growers and Food Producers	
	Adelaide Showground, Rose Tce, Wayville	Open Sunday, 8.30am - 12.30pm

MARKET MATTERS

Issue: 773 Market Date: 27 November 2022

If you wish to read Market Matters as a PDF, [click here](#)

In order to reduce paper usage, we encourage you to read Market Matters in your browser.

[ATM's](#)

[Reminder Electrical Extension Cords](#)

[Membership Discount](#)

[Deliveries](#)

You can read past market matters [here](#)



[ATM's](#)

As previously advised, ATM's are no longer available within the ASFM. There are two permanent ATMs at the southern entry to the Duncan Gallery (entry is via the Atrium running east/west) only a short distance from the market. Please direct customers to these permanent ATMs. We are unable to provide cash out at the Info stand. There will be an initial period of frustration for some customers but we are already seeing customers that previously used them, now bring cash with them, but change is often not easy and we appreciate that.

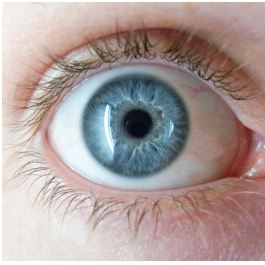


[ELECTRICAL EXTENSION CORDS](#)

REMINDER: All electrical goods will be unplugged from **ALL** RAHS extension cords remaining in place this **Sunday 27th November immediately after the market closes**. It will be your responsibility to prevent stock loss by replacing them beforehand.

[MEMBERSHIP DISCOUNT](#)

A reminder that you **MUST** physically **SIGHT** a members membership card or a correctly dated sticker issued by the information stand in order to

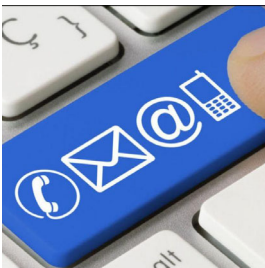


give someone membership discount. A photo of their membership card on their phone is **NOT OK** and does not constitute proof of membership. Please make sure that all staff are aware that photos etc cannot be accepted. The membership income is vital to the success of the market, so please only give member prices to those that are genuinely **CURRENT** members.



DELIVERIES

For the safety of people in the showground during the week, the stallholder gates in the south west corner to the market compound are now required to be closed and locked with a bike lock during the week. ALL Delivery drivers must call the office on the operations phone **0419 105 228** to gain access. Regular delivery drivers will be given the code to open the gates themselves. For those Stallholders that have deliveries made on their behalf, please inform the delivery company that if the drivers dismantle other areas of the fencing to gain access (which sadly some have been doing), they will be restricted to NO vehicle access in the future.



CONTACT DETAILS: To contact market staff during office hours only:
ASFM Office - 82318155 Tues - Friday 9.30am - 4pm **Messages left on this phone will not be accessed outside of these hours.**

- Operations phone - 0419 105 228
- Roz Becker - Marketing & Communications - 0482 615 750
- Christine Robertson - Executive Officer 0414 843 567

Saturday or After Hours -

Christine Robertson - Executive Officer 0414 843 567

Sunday Only 6am - 2pm - Jacqui on 0419 105 228

Emails: operations@adelaidefarmersmarket.com.au (checked Tues - Fri)
info@adelaidefarmersmarket.com.au (checked all days)

Stallholders Attending/Returning 27 November

Bone Appetite Barkery, 81 Acres, Barmera Sweet Potatoes, Food Forest, Good Country Hemp, Haaseford Farms, Origin of Taste, Riverside Dairy, SA Bio Char.

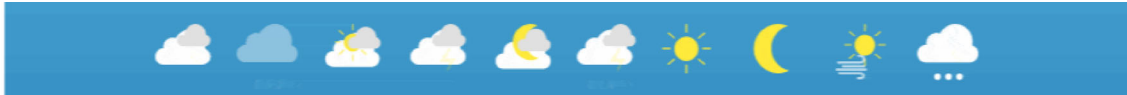
Stallholders NOT Attending/Returning 27 November

4 Paws, Cooina, Gentleman Jerky, Kimchi Club, Never Never Gin, LOBO Cider, Milkless, Nuthin But Natives, OMGhee, Opa Alfajores, Rohdes Free Range Eggs, Semaphore Pantry, Taronga Almonds, Varci Tonics, Whites Valley Jalopenas, Sacred Grove.

27 November - Bowerbird Design Market
27 November - Cactus & Succulent Sale
4 December - Santa's Wonderland
4 December - Gilles at the Grounds
18 December - Gilles at the Grounds
22 January - Gilles at the Grounds



[Read More About This Week's Market](#)



Cloudy. Medium (60%) chance of showers. Winds west to southwesterly 20 to 30 km/h. Min 14 Max 21

Latest BOM Weather Forecast

Copyright © 2022 Adelaide Showground Farmers' Market Stallholders Newsletter, All rights reserved.

Want to change how you receive these emails?
You can [update your preferences](#) or [unsubscribe from this list](#).

