

[View this email in your browser](#)

 <p>Adelaide <b>Farmers'</b> Market Showground</p>	<b>South Australian Produce Direct</b> <b>From Local Growers and Food Producers</b>	
	Adelaide Showground, Rose Tce, Wayville	Open Sunday, 8.30am - 12.30pm

# MARKET MATTERS

**Issue: 710 Market Date: 5 September 2021**

If you wish to read Market Matters as a PDF, [click here](#)

In order to reduce paper usage, we encourage you to read Market Matters in your browser.

Dear Stallholders,

**THINGS TO NOTE:**

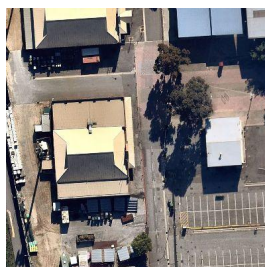
- [Father's Day 5 September](#)
- [Outside Stallholder Storage](#)
- [Marquee Weights](#)
- [No vehicle access after 8.15am](#)
- [Covid Update](#)



**This Sunday is FATHER'S DAY**

This Sunday we encourage you to make the most of Father's Day with your merchandising and member specials. There will be a Jumping Castle on the eastern end lawn, and a Kids' Club with Father's Day activities.

**Happy Father's day to all the Market Dads.**



**REMINDER - Outside Stallholder STORAGE for 12 September**

Stallholders that currently store their equipment in the Stirling Angus pavilion during the week and who are not attending the market on the 12th September are required to store their equipment in the RAHS Dairy Hall immediately west of the market, on the other side of the Western Boulevard. Please liaise with Jacqui on Sunday morning for access.

**Marquee WEIGHTS**



Each week we are finding outside stallholders that have not adequately weighted or secured their marquees. As a condition of trading at the market, each leg of your marquee/s needs to be weighted or securely tied off to a fixed object (like a tree or car). This is an important safety requirement for everyone. Sadly for safety reasons if your marquees are not weighted, you will be required to take them down and trade without cover.



#### **NO Vehicle access after 8.15AM**

Please make sure you are on time on Sunday mornings as all vehicle access gates will close due to safety reasons at 8.15am. If you arrive after 8.15am you will need to sack truck your equipment to your site.



#### **The activity restrictions remain at LEVEL ONE**

- It remains mandatory to wear masks inside the pavilion for stallholders and customers. (Please make sure if you pull your mask down to drink or eat, you're well away (at least 1.5ms) from the serving counter and customers.)
- It is discretionary if you wish to wear a mask outside, however please still maintain your 1.5m social distancing
- Ask customers to step outside the pavilion to consume food or beverages.
- Thank you all for continuing to work with us to keep the market a safe place to shop



**CONTACT DETAILS:** To contact market staff: **Tues – Friday** (10am to 4.30pm)

- ASFM Office - 82318155
- Operations phone - 0419 105 228
- Christine Robertson - Executive Officer 0414 843 567

#### **Saturday or After Hours -**

Christine Robertson - Executive Officer 0414 843 567

**Sunday 6am - 2pm** - Jacqui Holmes - Operations phone - 0419 105 228

**Email:** [operations@adelaidefarmersmarket.com.au](mailto:operations@adelaidefarmersmarket.com.au)

#### **Returning/New/Fortnightly Stallholders**

Barmera Sweet Potatoes, Choice Mushrooms, Dinko Tuna, Domain Day, Lobo Cider, Riverside Dairy, SA Biochar & Honey, Varci Tonics, Whites Valley Truffles.

#### **Stallholders NOT attending 5 September**

81 Acres, Bone Appetite, Coinda Stone Fruit, Eating Kindly, Fiaje, Food Forest, Jamface, Just Gluten

Free, Haaseford Farms, Lovely Valley Truffles, McLachlan's Smokery, Rich Pickings, Rohdes Free Range Eggs, The Prawn Store, Yummy Veggies

---



#### UPCOMING SHOWGROUND EVENTS

12 September - Gilles @ the Grounds  
26 September - Gilles @ the Grounds  
2 - 3 October - Hello Baby Fair  
9 -10 October - Cactus & Succulent Show  
15 - 17 October - Sunday Mail Home Show  
16 - 17 October - Animal Expo  
17 October - Gilles @ the Grounds  
24 October - SA Boat and Fishing and 4WD Adventure Show  
29 - 31 October - Supanova Comic Con & Gaming

[Read More About This Week's Market](#)

---



Partly cloudy. Slight (30%) chance of a shower. Light winds becoming southwesterly 15 to 25 km/h during the morning. Min 7 Max 15

[Latest BOM Weather Forecast](#)

---

*Copyright © 2021 Adelaide Showground Farmers' Market Stallholders Newsletter, All rights reserved.*

Want to change how you receive these emails?  
You can [update your preferences](#) or [unsubscribe from this list](#).

