

[View this email in your browser](#)

	<b>South Australian Produce Direct</b> <b>From Local Growers and Food Producers</b>	
	Adelaide Showground, Rose Tce, Wayville	Open Sunday, 8.30am - 12.30pm

# MARKET MATTERS

**Issue: 729** Market Date: 23 January 2022

If you wish to read Market Matters as a PDF, [click here](#)

In order to reduce paper usage, we encourage you to read Market Matters in your browser.

Dear Stallholders,

[Marquee WEIGHTS](#)

[Valentines Day](#)

[Rose Tce Parking](#)

[COVID Update](#)

[CLOSE Contacts](#)



### [Marquee WEIGHTS](#)

The wind has picked up this week so it will be extremely important that your marquees outside are weighted adequately as soon as the marquee is put up. Once your marquee is erected, please make sure the first thing you do next is secure it with weights on ALL legs. **DO NOT** leave it until all your produce is set up. **DO NOT** tie your marquee of to the temporary fencing around the market as this is not stable in high winds as requested by the RAHS. Attention to risk management keeps the market safe for everyone.



### [VALENTINES Day](#)

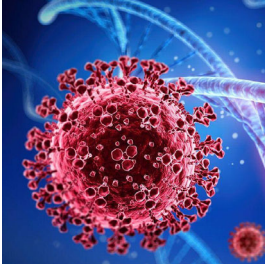
Are you doing any specials or specific products for Valentines Day? If so please let Roz (our marketing & communications guru) know so we can promote it in the lead up. It could be a heart shape cake like Lato Cakery's or a 'two for the price of one' deal or anything you like that can be related to Valentines Day and available Sunday 13 February. Email Roz all the details on [rbecker@adelaidefarmersmarket.com.au](mailto:rbecker@adelaidefarmersmarket.com.au)



### [Rose Tce Parking](#)

Boom gates to enter Rose Terrace Car Park #2, allowing free entry, will be raised throughout the period that the extended Covid vaccination clinic is operating. The boom gate at Leader Street will operate as normal but there will be no access along Western Crescent to or from the North West Car Park after 7.45am. Stallholders must park as always in the stallholders carpark, south of the market area.

---

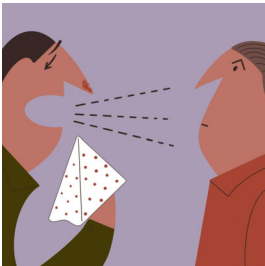


### [COVID Update](#)

QR Check in is required on entry to the market. Wearing of masks in the pavilion is **Mandatory** for all unless a valid health exemption is held. **Eating & drinking is NOT permitted** inside the pavilion to prevent masks being removed. We ask all stalls serving food or beverages to remind customers of the requirement to leave the pavilion before their purchases are consumed. Wearing of masks outside is highly recommended. **ALL** stallholders are required to have hand sanitiser available and within easy reach for customer use at all times.

Stallholders/staff exhibiting symptoms prior to market day should not attend the market until the symptoms dissipate and the affected person follows selfisolation or medical advice. Covid-19 symptoms include (but are not limited to) fever, cough, sore throat, fatigue and shortness of breath. Covid-19 most often begins with a temperature of 37.3C degrees or more and is contagious from the first sign of illness.

---

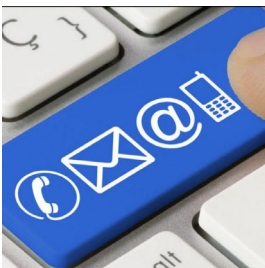


### [CLOSE Contacts](#)

In South Australia a 'close contact' is defined as: a household member or intimate partner of a person with COVID-19 during their infectious period, someone who has had close personal interaction with a person with COVID-19 during their infectious period - for 15 minutes or more and where masks are not worn by the person and the COVID-19 case and in close physical proximity and in an indoor setting, someone who has been notified by SA Health that they are a close contact. someone who has been to an [exposure site](#) listed on the SA Health website.

If you are considered a Close Contact you can find out what you need to do [HERE](#)

---



**CONTACT DETAILS:** To contact market staff during office opening hours only:

- ASFM Office - 82318155 Tues - Friday 9.30am - 5pm
- Operations phone - 0419 105 228
- Roz Becker - Marketing & Communications - 0482 615 750
- Christine Robertson - Executive Officer 0414 843 567

### **Saturday or After Hours -**

Christine Robertson - Executive Officer 0414 843 567

**Sunday Only 6am - 2pm - Jacqui Holmes - Operations phone - 0419 105 228**

**Emails:** [operations@adelaidefarmersmarket.com.au](mailto:operations@adelaidefarmersmarket.com.au) (checked Tues - Fri)  
[info@adelaidefarmersmarket.com.au](mailto:info@adelaidefarmersmarket.com.au) (checked all days)

---

### **Stallholders Attending/Returning January 23**

Bone Appetite Barkery, 81 Acres, Hillside Herbs, Eating Kindly, Feather & Peck, Food Forest, Good Country Hemp, Greedy Edie, OMGhee, SA Bio Char & Honey, Sacred Grove,

### **Stallholders not Attending January 23**

4 Paws, Barmera Sweet Potatoes, Bickleigh Vale Farms, Bucket Project, Coinda, Do Bee Honey, Haaseford Farms, LOBO Cider, Prawn Store, Rich Pickings, Riverside Dairy, Milkless, Nourish'd Naturally, Rohdes Free Range Eggs, Taronga Orchard Almonds, Varci Tonics, Whites Valley Jalapeños

---



20 Feb - Gilles @ the Grounds  
20 Feb - Oz Comic Con  
20 March - Gilles @ the Grounds  
3 April - ASFM Outdoor Market Only (Leader St)

[Read More About This Week's Market](#)

---



Humid. Partly cloudy. Medium (50%) chance of showers. The chance of a thunderstorm in the afternoon and evening. Winds northeasterly 15 to 25 km/h becoming light during the evening. Min 21 Max 29

---

**Latest BOM Weather Forecast**

*Copyright © 2022 Adelaide Showground Farmers' Market Stallholders Newsletter, All rights reserved.*

Want to change how you receive these emails?  
You can [update your preferences](#) or [unsubscribe from this list](#).

