



## South Australian Produce Direct From Local Growers and Food Producers

Adelaide Showground, Rose Tce, Wayville

Open Sunday, 8.30am - 12.30pm

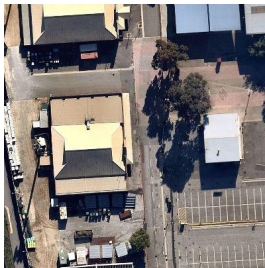
# MARKET MATTERS

Issue: **709** Market Date: 29 August 2021



### ADVANCE NOTICE for Christmas market dates.

An ASFM Christmas Twilight market is scheduled for **Thursday 23 December 2021** from 5pm to 8pm. **There will be no market on Sunday 26 December 2021.** Last year's Christmas Twilight market was a ripper and we urge you to attend this year. The hours have been adjusted to reflect the most popular time from last year.



### Outside Stallholder STORAGE for 5 & 12 September

Stallholders that currently store their equipment in the Stirling Angas pavilion during the week and who are not attending the market on the 5th and/or 12th September are required to store their equipment in the RAHS Dairy Hall immediately west of the market, on the other side of the Western Boulevard. Please liaise with Jacqui on Sunday morning for access.



### Stallholder RUBBISH

A reminder that all stallholder rubbish needs to be removed from site by the stallholder. Please do NOT place your rubbish in the bins provided for ASFM customers.



### A REMINDER re our Responsible Packaging Policy

We have noticed that a number of stallholders are not adhering to our Responsible Packaging policy.

***"ALL stallholders must use and offer EXCLUSIVELY certified compostable produce barrier bags, carry bags".*** Please make sure your carry bags are certified compostable. If you would like to refresh yourself with the full policy, you can read it [here](#)



### The activity restrictions remain at LEVEL ONE

- It remains mandatory to wear masks inside the pavilion for stallholders and customers. (Please make sure if you pull your mask down to drink or eat, you're well away (at least 1.5ms) from the serving counter and customers.)
- It is discretionary if you wish to wear a mask outside, however please still maintain your 1.5m social distancing
- Ask customers to step outside the pavilion to consume food or beverages.
- Thank you all for continuing to work with us to keep the market a safe place to shop



**CONTACT DETAILS:** To contact market staff: **Tues – Friday** (10am to 4.30pm)

- ASFM Office - 82318155
- Operations phone - 0419 105 228
- Christine Robertson - Executive Officer 0414 843 567

#### **Saturday or After Hours -**

Christine Robertson - Executive Officer 0414 843 567

**Sunday 6am - 2pm** - Jacqui Holmes - Operations phone - 0419 105 228

**Email:** [operations@adelaidefarmersmarket.com.au](mailto:operations@adelaidefarmersmarket.com.au)

#### **Returning/New/Fortnightly Stallholders**

81 Acres, Bickleigh Vale, Bushtucker Icecream, Coinda Stone Fruit, Do Bee Honey, Eko Stonefruit, Haaseford Farms, Hahndorf Gourmet, Lovely Valley Truffles, McLachlan's Smokery, Rohdes Free Range Eggs, The Prawn Store

#### **Stallholders NOT attending 29 August**

Barmera Sweet Potatoes, Bone Appetit, Choice Mushrooms, Dinko Tuna, Food Forest, Hillside Herbs, Milkless, Najobe Beef, Riverside Dairy, SA Biochar & Honey, Varci Tonics



#### **UPCOMING SHOWGROUND EVENTS**

- 26 September - Gilles @ the Grounds
- 27 - 30 September - Wine Show
- 9 -10 October - Cactus & Succulent Show
- 15 - 17 October - Sunday Mail Home Show
- 16 - 17 October - Animal Expo
- 17 October - Gilles @ the Grounds
- 24 October - SA Boat and Fishing and 4WD Adventure Show



Partly cloudy. High (70%) chance of showers, most likely in the morning. Winds northwesterly 15 to 25 km/h tending westerly 20 to 30 km/h during the morning then becoming light during the evening. Min

9 Max 16